

EX-TRAFIRE 85HD

INDUSTRIAL CUTTING. HEAVY-DUTY PERFORMANCE.

SOLUTIONS / INDUSTRIES



Automotive
and transportation



Education and
Training



General
Fabrication

Last update of this page: 07/11/2022. See Revision history for details.



EX-TRAFIRE® 85HD



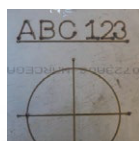
- CUTTING 85 A CURRENT**
- MATERIAL 45+ mm THICKNESS**
- VARIOUS OPERATION MODES**

IMPRESSIVE PERFORMANCE



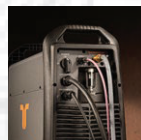
- + Extremely high cutting speed
- + Maximum cutting quality, even with long cuts
- + Also ideal for automated processes

MARKING MODE



- + Automatic gas identification (air, nitrogen, argon)
- + Integrated gas saving function
- + Fine, deep or wide markings
- + Optional smooth marking for applications below 20A

READY FOR INDUSTRY 4.0



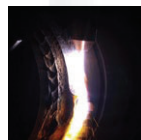
- + Industry leading connectivity
- + CAN / RS 485 / RS 422 Bus interface (optional)
- + Easy monitoring
- + Expandable and updatable

AUTOMATIC SETTINGS



- + Cutting gas media, electricity and pilot current
- + Compensation for pressure drops
- + Fewer operating errors, better cutting quality

HIGHEST FLEXIBILITY



- + Plate thicknesses up to 45 mm and more
- + For mechanized and manual applications
- + Gouging with high removal rate
- + Suitable for worldwide use

NEW CUTTING TORCH FHT® EX105TT



- + Torch design award winner
- + Optimized ergonomics
- + Relaxed PE and PA cutting
- + 100% duty cycle

Last update of this page: 07/11/2022. See Revision history for details.

EX-TRAFIRE® 85HD

SPECIFICATIONS

Output current [A]	20-85
Modes	cutting / grid cutting / gouging / marking
Duty cycle	100 % @ 85 A
Rated output voltage [VDC]	160
Severance cutting capacity [mm]	45 ⁽¹⁾
Piercing capacity [mm]	20 ⁽¹⁾
Recommended cutting capacity [mm]	25 ⁽¹⁾
Plasma gas	compr. air / nitrogen / argon
Max. Air flow [lpm/bar]	195/5
CNC interface / CAN BUS interface	optional / optional
Preadjusted voltage divider ratio	50:1
Input voltage [VAC]	3 x 400 ± 15 % ⁽²⁾
Frequency [Hz]	50/60
Dimensions (L×H×W) [mm]	613 x 515 x 302
Weight [kg]	24
Certification depending on region	CE, C-TICK, CCC, CSA
Maximum input pressure [bar/psi]	10/145
Protection level	IP23S
Insulation class	F
Type of hand torch	FHT-EX®105TTH
Type of machine torch	FHT-EX®105TTM

⁽¹⁾ related to low-alloy steel (mild steel)

⁽²⁾ suitable for generator use



4 DIFFERENT OPERATION MODES

The plasma cutting systems in the EX-TRAFIRE®HD range are the absolute specialists in meeting tough demands in continuous operation. The mobile EX-TRAFIRE®85HD plasma cutting system with 100% duty cycle is the perfect solution for demanding heavy duty applications in industry.



CUTTING



GRID CUTTING



MARKING



GOUGING

Last update of this page: 22/03/2023. See Revision history for details.

EX-TRAFIRE® 85HD

ORDERING INFORMATION

Description	Length	Part No.
MANUAL PLASMA CUTTING SYSTEMS		
EX-TRAFIRE®85HD/CE/3x400 V Hand System/STD EQUIPPED/FHT-EX®105TTH Torch 5m/Starter Kit	5 m	EX-4-010-009
EX-TRAFIRE®85HD/CE/3x400 V Hand System/STD EQUIPPED/FHT-EX®105TTH Torch 8m/Starter Kit	8 m	EX-4-010-010
EX-TRAFIRE®85HD/CE/3x400 V Hand System/STD EQUIPPED/FHT-EX®105TTH Torch 15m/Starter Kit	15 m	EX-4-010-011
EX-TRAFIRE®85HD/CE/3x400 V Hand System/STD EQUIPPED/FHT-EX®105TTH Torch 23m/Starter Kit	23 m	EX-4-010-012
MECHANIZED PLASMA CUTTING SYSTEMS		
EX-TRAFIRE®85HD/CE/3x400 V Machine System/FULLY EQUIPPED/FHT-EX®105TTM STD-NR Torch 8m/Starter Kit	8 m	EX-4-011-019
EX-TRAFIRE®85HD/CE/3x400 V Machine System/FULLY EQUIPPED/FHT-EX®105TTM STD-NR Torch 15m/Starter Kit	15 m	EX-4-011-020
EX-TRAFIRE®85HD/CE 3x400 V Machine System/FULLY EQUIPPED/FHT-EX®105TTSM Torch 8m/Starter Kit	8 m	EX-4-012-006
EX-TRAFIRE®85HD/CE 3x400 V Machine System/FULLY EQUIPPED/FHT-EX®105TTSM Torch 15m/Starter Kit	15 m	EX-4-012-007
EX-TRAFIRE®85HD/CE/3x400 V Machine System/STD EQUIPPED/FHT-EX®105TTM STD-NR Torch 8m/Starter Kit	8 m	EX-4-013-002
EX-TRAFIRE®85HD/CE/3x400 V Machine System/STD EQUIPPED/FHT-EX®105TTM STD-NR Torch 15m/Starter Kit	15 m	EX-4-013-003
EX-TRAFIRE®85HD/CE 3x400 V Machine System/STD EQUIPPED/FHT-EX®105TTSM Torch 8m/Starter Kit	8 m	EX-4-014-002
EX-TRAFIRE®85HD/CE 3x400 V Machine System/STD EQUIPPED/FHT-EX®105TTSM Torch 15m/Starter Kit	15 m	EX-4-014-003
PLASMA CUTTING UNITS		
EX-TRAFIRE®85HD/CE/3x400 V power supply unit/FULLY EQUIPPED		EX-4-001-001
EX-TRAFIRE®85HD/CE/3x400 V power supply unit/STD EQUIPPED		EX-4-003-001

NOTE:

STD (standard) EQUIPPED - CNC-Port

FULLY EQUIPPED - CNC-Port & Serial Interface

AVAILABLE BULK PACKS

Description	Pcs	Part No.
Bulk Pack - Electrode 45-105 A - 25 pcs	1	EX-5-401-061
Bulk Pack - Nozzle 75 A - 25 pcs	1	EX-5-410-032
Bulk Pack - Nozzle Smoothline- 25 pcs	1	EX-5-410-060
Bulk Pack - Nozzle 45 A - 25 pcs	1	EX-5-410-061
Bulk Pack - Nozzle 55/65 A - 25 pcs	1	EX-5-410-063
Bulk Pack - Nozzle 85 A - 25 pcs	1	EX-5-410-065
Bulk Pack - Hand Shield 45-85 A - 18 pcs	1	EX-5-422-041
Bulk Pack - Machine Shield Smoothline - 18 pcs	1	EX-5-422-060
Bulk Pack - Machine Shield 45-85 A - 18 pcs	1	EX-5-422-061

ACCESSORIES

Description	Pcs	Part No.
CNC Interface 14-pin Plug Kit	1	EX-0-803-001
CNC Interface connection lead 3 m	1	EX-0-803-003
CNC Interface connection lead 6 m	1	EX-0-803-004
CAN bus connection cable 10 m	1	EX-0-803-006
CAN bus connection cable 5 m	1	EX-0-803-007
RS422 bus connection cable 10 m	1	EX-0-803-008
RS422 bus connection cable 5 m	1	EX-0-803-009
Universal connection cable 10 m	1	EX-0-803-010
Universal connection cable 5 m	1	EX-0-803-011
Silicone Grease 25 ml	1	EX-0-805-001
Work lead with clamp 300 A/4 m/16 mm2/EU-plug 35-70 mm2	1	EX-5-543-037
Work lead with clamp 300 A/8 m/16 mm2/EU-plug 35-70 mm2 (ON REQUEST)	1	EX-5-543-001
Work lead with clamp 300 A/15 m/16 mm2/EU-plug 35-70 mm2 (ON REQUEST)	1	EX-5-543-002
Work lead with clamp 300 A/23 m/16 mm2/EU-plug 35-70 mm2 (ON REQUEST)	1	EX-5-543-003

Last update of this page: 07/11/2022. See Revision history for details.

EX-TRAFIRE® 85HD



FRONT VIEW



BACK VIEW



SIDE VIEW

Last update of this page: 07/11/2022. See Revision history for details.