

NEW PRODUCTS

MOBILE WORKING STATIONS



Rhino Cart Mobile Working Station

Quickly clamp and fixture at any point on the surface.
Accurately setup stock for each new project.

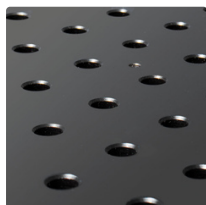
The Rhino Cart Mobile Fixturing Station is a turnkey system for fixturing and clamping in welding and fabrication.

Clamp and fixture at any point on the reversible, flat ground, nitrided (heat treated) tabletop for accuracy in all of your setups.

16 mm Diameter Holes on a 50x50 mm Grid Pattern.



Reversible Tabletop



CNC Hole Pattern



Locking Casters



Part No.	Tabletop Size (mm)	Table Height (mm)	Tabletop Plate Thickness (mm)	Tabletop Flatness (mm)	Static Loading Capacity (kg)	Weight (kg)
TDQ612075	1,200 x 750	910	16	0.3 per 600 x 600	680	210
TD6-1212Q-F3	1,200 x 1,200	910	16	1.0 per 600 x 600	544	294
TD6-1575Q-F3	1,500 x 750	910	16	0.5 per 600 x 600	680	277

Rhino Scissor Lift

Manual-hydraulic power, delivers lifting capabilities with a 1200 x 750 mm fixed tabletop, crafted from a high-quality nitride-coated steel plate, identical to the original Rhino Cart.

Effortlessly raise or lower the platform using the foot pedal, allowing you to achieve the perfect working height for your welding projects. This flexibility ensures optimal comfort and efficiency during your welding operations.

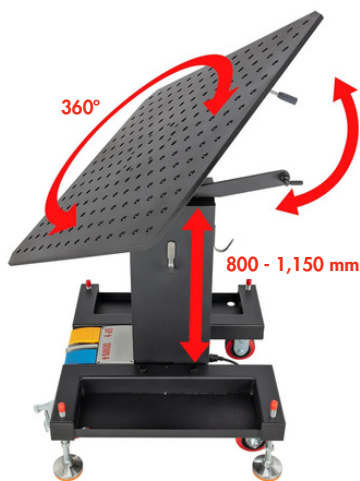


Demo Video

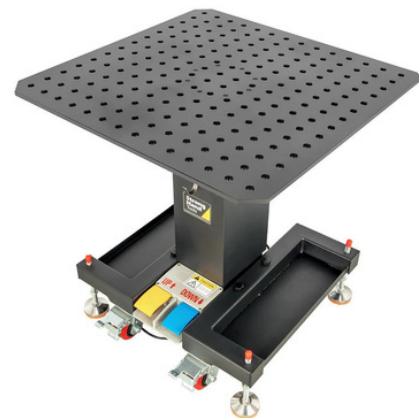
Part No.	Tabletop Dimensions (mm)	Tabletop Thickness (mm)	Hole Diameter (mm)	Grid Pattern (mm)	Height Adjustment (mm)	Static Load Capacity (kg)	Weight (kg)
TDSL12075	1200 x 750	16	16	50 x 50	548 - 970	499	200

E-Lift Turntable

The electric hydraulic-powered lift is equipped with lifting capabilities and boasts a 750 x 750 mm tabletop that can rotate a full 360° and tilt up to 45°, providing unparalleled flexibility for your welding and fixturing needs.



Demo Video



Part No.	Tabletop Dimensions (mm)	Tabletop Thickness (mm)	Hole Diameter (mm)	Grid Pattern (mm)	Height Adjustment (mm)	Load Capacity (kg)	Weight (kg)
TLA67070	750 x 750	12	16	50 x 50	800 - 1,150	300	200