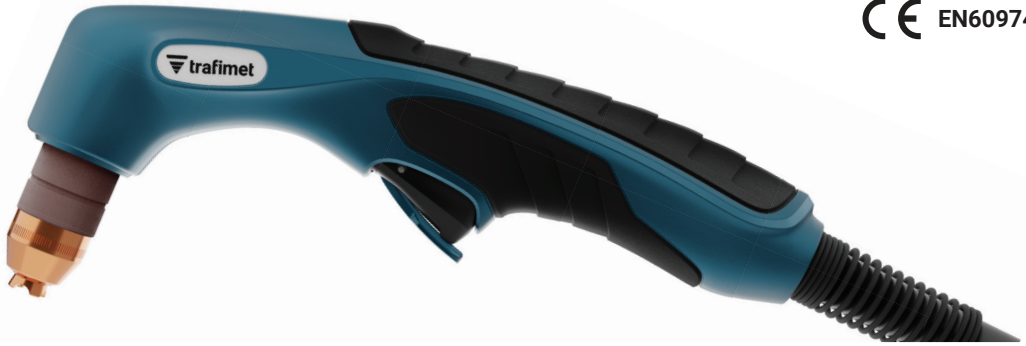


PLUSCUT 85

CE EN60974-7



COAXIAL CABLE			
CODE	↔		
PAP306M-004-SA3	6 m	19.7'	CENTRAL 004
PAP312M-004-SA3	12 m	39.4'	
PAP306M-304-SA3	6 m	19.7'	TRAFIMECTOR 304
PAP312M-304-SA3	12 m	39.4'	

TECHNICAL DATA			
NO HF	45 A	65 A	85 A
	0,6 kg		
	1.32 lb		
PEAK	500		
	min. 4,5 - max. 5,0 bar		
	225 l/min @ 5 bar		
	Compressed air		
X %	100%	100%	100%
Max. Clean @ 25cm/min.	10mm	22mm	30mm
Maximum	15mm	26mm	35mm
Severance	20mm	30mm	40mm
Pierce	12mm	16mm	19mm

CABLE ASSEMBLY			
CODE	↔		
PAP306M-004-SC3	6 m	19.7'	CENTRAL 004
PAP312M-004-SC3	12 m	39.4'	
PAP306M-304-SC3	6 m	19.7'	TRAFIMECTOR 304
PAP312M-304-SC3	12 m	39.4'	

For Central 004 and Trafimector 304 pin connection scheme please see the relevant page.

CONSUMABLE KITS

CODE		
PT1045	45 A consumable kit	1
PT1065	65 A consumable kit	1
PT1085	85 A consumable kit	1



CONSUMABLES FOR CUTTING (STANDARD)

	CODE		Ø	↔	CONSUMABLE KIT CONTENT			PCS X	X
					PT1045 45 A	PT1065 65 A	PT1085 85 A		
1	CV0384P			24,4 mm	•	•	•	1	2
2	PC0371P			34,8 mm	•	•	•	1	2
3	PD0403P09		0,95 mm 0,037"	16,6 mm	•			5	2
3	PD0403P12		1,2 mm 0,047"	16,6 mm		•		5	2
3	PD0403P13		1,35 mm 0,053"	16,9 mm			•	5	2
4	PE0363P			23 mm	•	•	•	1	2
5	PR0362P			29,5 mm	•	•	•	5	2

CONSUMABLES FOR CUTTING (EXTENDED)

	CODE		65 A	85 A	PCS X	X
1	CV0385P		•	•	1	2
2	PC0371P		•	•	1	2
3	PD0406P12		•		5	2
3	PD0406P13			•	5	2
4	PE0363P		•	•	1	2
5	PR0363P		•	•	5	2

CONSUMABLES FOR GOUGING

	CODE		65 A	85 A	PCS X	X
1	CV0386P		•	•	1	2
2	PC0371P		•	•	1	2
3	PD0409P11		•		5	2
3	PD0409P13			•	5	2
4	PE0363P		•	•	1	2
5	PR0362P		•	•	5	2

	CODE		Description	
6	FH1716P		air tube	2
7	EA1920		o-ring	5
7	PF1390		torch head	1
8	BX0917		trigger/lever kit with microswitch	1
8	PT0366		microswitch kit	1
9	TP0320		handle with screws	1
10	BW0311		ball joint for cable assembly	1

	CODE		Description	
10	EA2367		spring for coaxial cable	1
11	PH0930-06		coaxial cable - 6 m / 19.7' - 1/4 G	1
11	PH0930-12		coaxial cable - 12m / 39.4' - 1/4 G	1
11	PH4170-06		cable assembly - 6 m / 19.7' - 1/4 G	1
11	PH4170-12		cable assembly - 12 m / 39.4' - 1/4 G	1
12	FY0043		plasma central adaptor - 5 pins	1
12	FY0090		TRAFIMECTOR® central adaptor - torch side	1

STANDARD