

ERGOPLUS 25

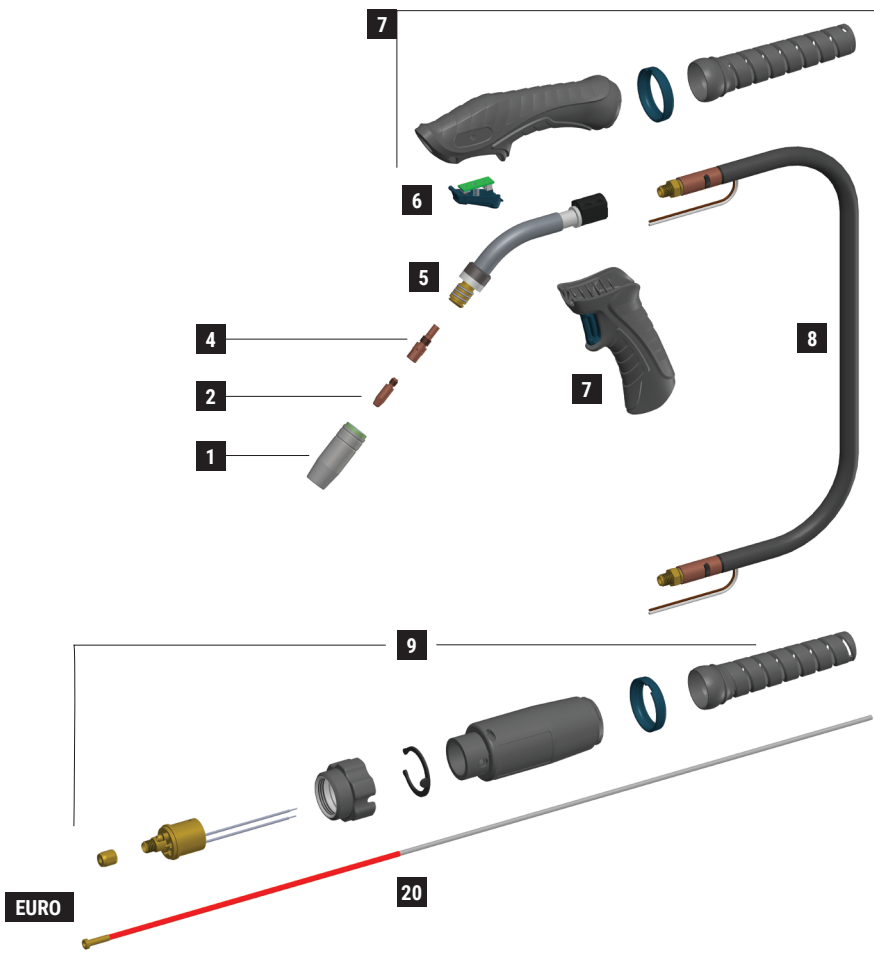
CE EN60974-7



CODE	↔			
MA4202-030	3 m	10'		1
MA4202-040	4 m	12'		1
MA4202-050	5 m	16.4'		1
EURO				

CODE	↔			
MA4202X030	3 m	10'		25
MA4202X040	4 m	12'		25
MA4202X050	5 m	16.4'		25
EURO				

TECHNICAL DATA		
ERGOPLUS 25		
	0,9 kg	1.98 lb
	113	
V PEAK	113	
	0,8 ÷ 1,2 mm	.030" ÷ .045"
X 60%	230A CO2 - 220A Mix	



	CODE			Ø				REF	
1	MC0022		nozzle	11,5 mm	7/16"	57 mm	2"-1/4	145.0124	10
1	MC0023		nozzle	15 mm	19/32"	57 mm	2"-1/4	145.0076	10
1	MC0024		nozzle	18 mm	23/32"	57 mm	2"-1/4	145.0042	10
1	MC0025		nozzle	20 mm	25/32"	66,5 mm	2-5/8"	145.0169	10
1	MC0265		nozzle	11 mm	7/16"	57 mm	2"-1/4	-	10
1	MC0267		nozzle	14 mm	9/16"	57 mm	2"-1/4		10
2	MD0009-06		M6 - Cu	0,6 mm	.023"	28 mm	1"-3/32	140.0005	20
2	MD0009-08		M6 - Cu	0,8 mm	.030"	28 mm	1"-3/32	140.0051	20
2	MD0009-09		M6 - Cu	0,9 mm	.035"	28 mm	1"-3/32	140.0169	20
2	MD0009-10		M6 - Cu	1,0 mm	.040"	28 mm	1"-3/32	140.0242	20
2	MD0009-12		M6 - Cu	1,2 mm	.045"	28 mm	1"-3/32	140.0379	20
2	MD0009-14		M6 - Cu	1,4 mm	.052"	28 mm	1"-3/32	-	20
2	MD0009-16		M6 - Cu	1,6 mm	1/16"	28 mm	1"-3/32	140.0555	20
4	ME0016		M6 - copper			35 mm	1"-3/8	142.0001	10
4	ME0040		M8 - copper			35 mm	1"-3/8	-	10
4	ME0060		M6 - copper			37 mm	1"-15/32	-	10
4	ME0216		M6 - brass			35 mm	1"-3/8	-	10
20	GM0510		red steel liner	1,0 ÷ 1,2 mm	.040" ÷ .045"	3 m	10'	124.0026	1
20	GM0511		red steel liner	1,0 ÷ 1,2 mm	.040" ÷ .045"	4 m	12'	124.0031	1
20	GM0512		red steel liner	1,0 ÷ 1,2 mm	.040" ÷ .045"	5 m	16.4'	124.0035	1

	CODE			
5	BW0562		plastic body	10
5	EA0304		spring	10
5	MF1517		Ergoplus 25 torch head	1
6	MT0563		trigger kit	1
7	MT0562		handle kit	1
7	MT0566		pistol grip	1
8	MH0817-030		coaxial cable - 3 m / 10'	1
8	MH0817-040		coaxial cable - 4 m / 12'	1

	CODE			
8	MH0817-050		coaxial cable - 5 m / 16.4'	1
9	AR0070		EURO connector - air	1
9	BW0020		metal EURO nut	10
9	FA0026		liner nut M10x1	10
9	MT0565		Back box kit EURO	1

STANDARD